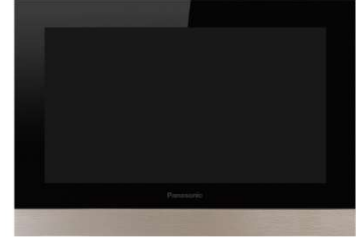


PRODUCT DATASHEET

Panasonic

Product Name :	<i>KNX TOUCH PANEL TP110</i>
Product Code :	<i>WRKT91115AR</i>
Product Series :	Thea IQ
Technical Specifications:	
<i>Operating Voltage</i>	12-24V
<i>Power Consumption</i>	12Vdc, 1.5A, 18W
<i>Recommended Power Supply and Permissible cable length</i>	12V - 4,5A (per device), Maximum 100 m at $\phi 1.6$ or 2.0 mm ²
<i>Operating Temperature</i>	-5°C... + 50 °C
<i>Relative Humidity</i>	0-90 %
<i>LCD Size</i>	10 Inch (1024x600)

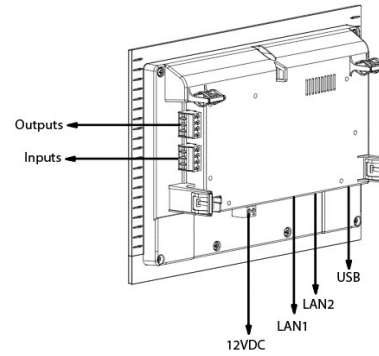


Characteristics

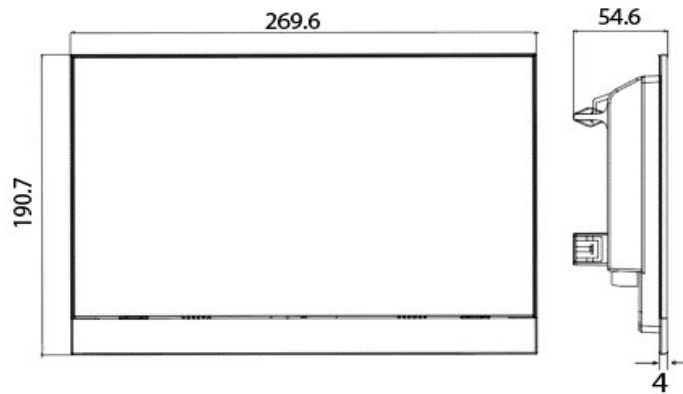
- Smart Home Functions
- Scene Functions
- Intercom Integration
- Alarm and Security
- Remote Control Apps (iOS®/Android™)

Installation:

- There are two dry contact relay on the device. With these relays, a control can be provided according to relay specification.
- Inputs are used to connect dry contact devices to the touch panel.
- 12VDC Input is used to connect the power supply to the touch panel. The energy required for the operation of the devices supplied from these terminals.
- LAN1 and LAN2 are used to connect touch panel to the network line. Please attention these steps during connection device to network line;
 - LAN1 is used to connect device to internet. Please connect internet-enabled network to LAN1.
 - Touch panel LAN1 and LAN2 ports can't connect to same network line.
- Also LAN1 and LAN2 network ID number should be different.
- USB port also used for firmware update.



Dimensions:



Panasonic Electric Works Elektrik.San. ve Tic. A.Ş.
 Abdurrahmangazi Mah. Ebubekir Cad. No: 44 Sancaktepe / İstanbul Tel: 0216 564 55 55 Fax: 0216 564 55 44
 ewtr.panasonic.com