

**Panasonic**

Accessory  
Solutions



<b>CONTENTS</b>	Yonca Plus 3-Gang Earthed Socket	4-5
	Panasonic Single Plug Socket	6-7
	Plug Socket with Handle	8-9
	Extension Cable	10-11
	Inline Switch	12-13
	Drywall Cases	14-15

## YONCA PLUS



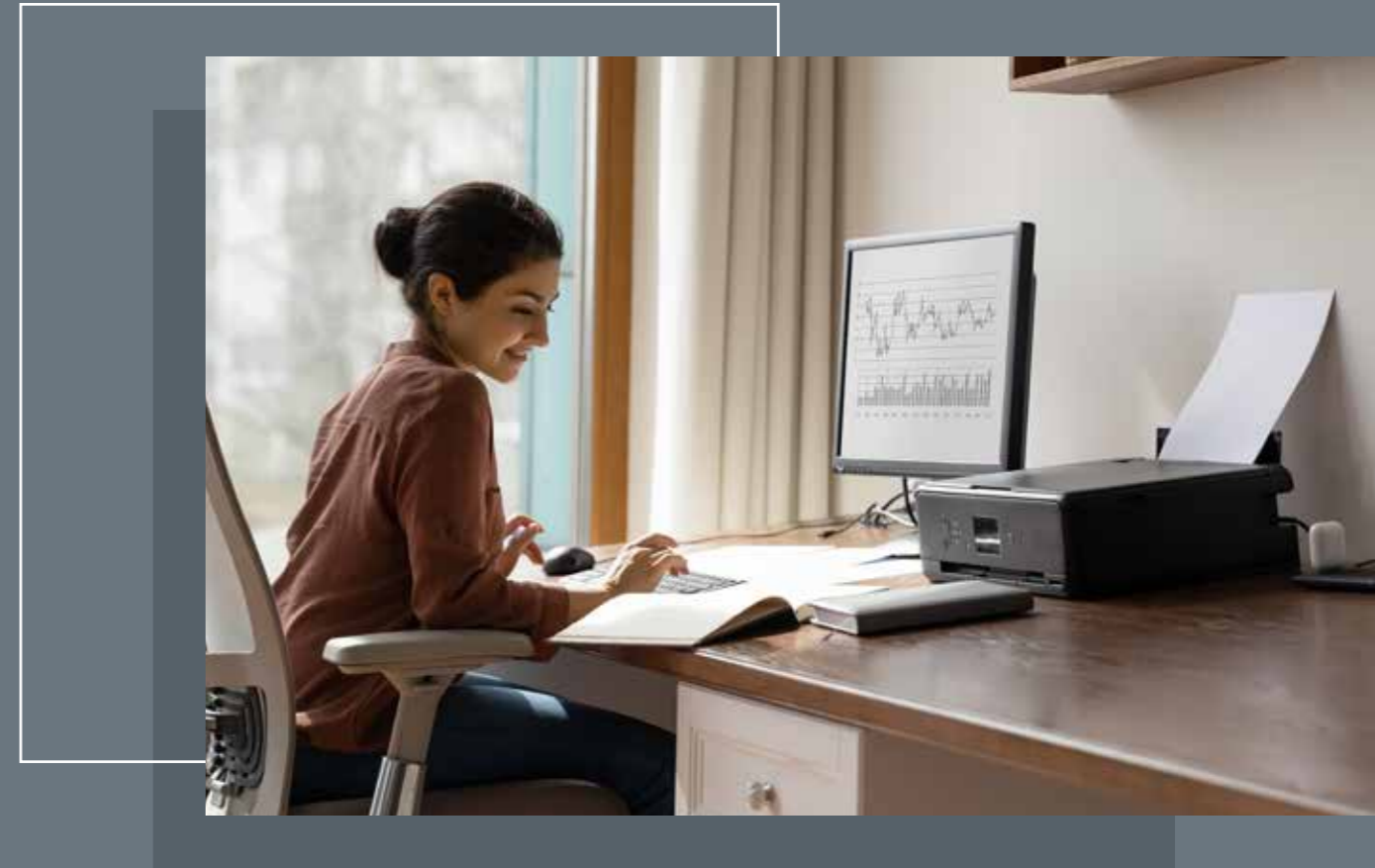
YONCA

### 3-GANG EARTHED SOCKET

Yonca Plus combines safety, reliability, and modern design in a single, elegant solution.

With three socket outlets, it offers versatile functionality, while its sleek lines enhance any interior.

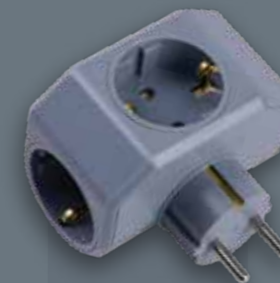
Available in white, black, and grey, Yonca Plus effortlessly blends style and practicality for a harmonious user experience.



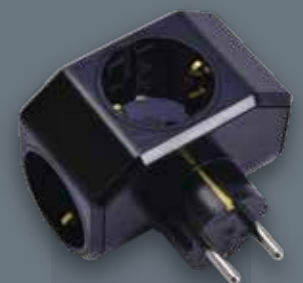
*Elegant lines, safe performance.*



**WHITE**  
90303003



**GREY**  
90303005



**BLACK**  
90303004

## SURGE-PROTECTED SINGLE PLUG SOCKET



SOCKET

### SURGE-PROTECTED PLUG SOCKET

Panasonic Surge-Protected Single Plug Socket features a sleek, durable design that fits seamlessly into any environment.

It protects against voltage fluctuations, short circuits, and overcurrent, while its grounding and shock-prevention features ensure safe and reliable operation.

The LED status indicator provides instant monitoring, and its compact, ergonomic form is perfect for home, office, or travel use.

With two integrated USB ports, multiple devices can be charged simultaneously, saving time and socket space.



Surge-Protected Single Plug Socket 1080J  
WATC00023GR-TR



Surge-Protected Single Plug Socket with USB 5V 2A  
WATC00033GR-TR



Single Plug Socket with USB 5V 2A  
WATC00013GR-TR

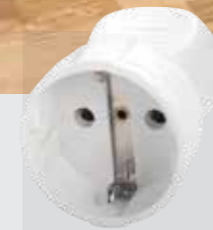
Charge two devices safely and simultaneously with USB-enabled protection against voltage spikes.

# EARTHED MALE PLUG



- ✓ Easy Installation
- ✓ Convenient Use

EARTHED MALE PLUG



Earthed Female Plug - White  
90301800



Earthed Female Plug - Black  
90301830



Earthed Male Plug - White  
90304100



Earthed Male Plug - Black  
90304110



Male Plug Mimosa White  
90305400



Male Plug Mimosa Black  
90305410



Monoblock Earthed Male Plug - White  
90304200



Monoblock Earthed Male Plug - Black  
90304202



Monoblock UPS Male Plug - White  
90304240



Monoblock UPS Male Plug - Black  
90304242

Plugs feature an ergonomic, functional design for safe and practical use. Made from durable materials, they adapt easily to everyday applications.

# EXTENSION CABLE



EXTENSION  
CABLE

Reach the Distance, Power  
with Persistence!



Earthed Extension Cable	
3m	90302300 ○
5m	90302400 ○

Extension Cable	
3m	90302100 ○
5m	90302200 ○
10m	90302210 ○

Reliable, durable, and easy to use, these extension cables deliver electricity safely at home, in the office, or anywhere it's needed.



Plug-Free,  
Struggle-Free!



## INLINE SWITCH

*2-pole design enhances safety and allows effortless on/off control—no plugging or unplugging needed. Compact, ergonomic, and made from recyclable materials, it combines practicality, efficiency, and sustainability.*



BLACK  
90302711



WHITE  
90302710

# INLINE SWITCH

# DRYWALL CASES



DRYWALL

Drywall Cases are designed for switches and sockets used in electrical installations, perfectly suited for drywall applications. These boxes provide a secure and sturdy electrical connection without compromising the aesthetic of the wall.

Made from halogen-free materials, they prevent the release of toxic gases and dense smoke in case of fire, enhancing fire safety. This feature makes them especially suitable for indoor electrical installations, as it protects both human health and the environment.

## Installing Flush-Mounted Drywall Box



First, ensure the wall surface is clean and even, and cut the area to the correct dimensions for a precise fit. Secure the box firmly in place using screws, making sure all electrical connections are performed safely. Once installed, plaster around the box to create a smooth, flush finish. Finally, check all connections to ensure they are secure and properly aligned, maintaining both safety and a neat appearance.

### DRYWALL CASES

HOLLOW WALL BOX SINGLE		90926006
HOLLOW WALL BOX 2-GANG		90926007
HOLLOW WALL BOX 3-GANG		90926008
HOLLOW WALL BOX 4-GANG		90926009
HOLLOW WALL BOX 5-GANG		90926010
HOLLOW WALL BOX 6-GANG		90926011

### HALOGEN-FREE DRYWALL CASES

	90926101
	90926102
	90926103
	90926104
	90926105
	90926106

### SWITCH BOXES

WALL BOX - DEEP AND EXTENDABLE		90926001
WALL BOX		90926003
WALL BOX - EXTENSION PIECE		90926005

### HALOGEN-FREE SWITCH BOXES

	90926301
	90926303
	90926305

### JUNCTION BOXES AND LIDS

SURFACE-MOUNTED DAMP FLOOR JUNCTION BOX Ø90 IP54		90937001	LUXURY JUNCTION BOX COVER (WITH PLASTIC LEGS)		90937003
--------------------------------------------------	---------------------------------------------------------------------------------------	----------	-----------------------------------------------	---------------------------------------------------------------------------------------	----------



Panasonic Electric Works Elektrik San. ve Tic. A.Ş.

Abdurrahmangazi Mah. Ebubekir Cad. No: 44 34887 Sancaktepe, İstanbul / Türkiye  
T: +90 (216) 564 55 55 F: +90 (216) 564 55 44 ewtr.panasonic.com info@tr.panasonic.com

**Panasonic**