



WRKT3500NC WATER LEAKAGE DETECTOR



The device is designed to detect water leakage. Please avoid contacting different type of liquids.



Recommended to use the probe supplied with the product



Only SELV (12V DC) type external power supply have to be used



WRKT3500NC

Panasonic®

Panasonic Electric Works Elektrik San.ve Tic. A.Ş.
Abdurrahmangazi Mah. Ebubekir Cad. No: 44
34887 Sancaktepe / İstanbul / Turkey
T: 0(216) 564 55 55 F: 0(216) 564 55 44

HOTLINE
444 8456

ewtr.panasonic.com

611078-EN

General Information

The water leakage detector is used to detect the basement, water tanks, bathroom, any concealed area or any site where water-based liquids may be leaked. Water leakage detector protects the users from expensive repairs and material losses that may be caused by the damage to the goods by detecting liquid leaks early.

If there is water detected between the electrodes of the probe, device passes to alert mode and gives notification with sound to the user. While device in the alert mode, the relay position on the device changes and system can get water leakage status (i.e. normally open or normally close dry contact) information from device.

Main Features

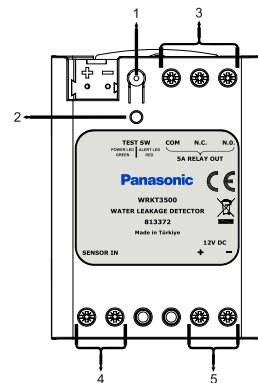
- NO and NC relay connection output
- Test function with button
- Alert notification with LED and sound
- DIN rail or wall mounting
- Equipped with a probe

Technical Data

Power	
Operating Voltage	12 VDC (SELV)
Current Consumption	100 mA
Environmental Conditions	
Ambient temperature	-5 C ... +45 °C
Storage temperature	-10 C ... +55 °C
Ambient humidity	5 ... 93% (non-condensing)
Housing	
Dimensions of device (HxWxD)	80.4x60x32.2 (mm)
Dimensions of probe (HxWxD)	19.8x42.4x9 (mm)
Probe connection	2 x screw terminals
Relay connection	3 x screw terminals
Power connection	2 x screw terminals

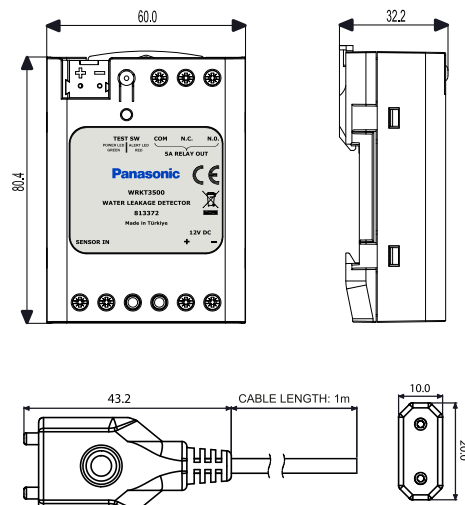
Probe Information	
Probe cable length	1 m (cuttable)
Detection response time	<5 sec
Electrode chemical resistance	Mains Water
Maximum probe cable length	1 m
Notification with Relay and Sound	
Protection type (IEC60529)	IP 20
Pollution degree (IEC60664)	2
Protection class (IEC61140)	II
Overvoltage category (IEC60664)	III
CE Marking / Standard	
EU Directives	In compliance with EMC, LVD

Product Components



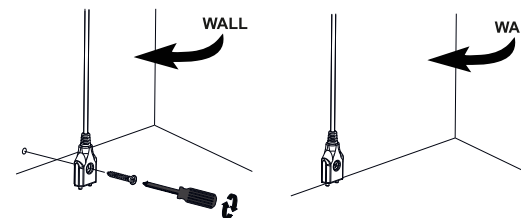
- 1- Test switch can be used for the final check of the output functionality and the buzzer.
- 2- Status led shows the devices status. Green colour shows the power. Red colour shows the alert.
- 3- Relay connection terminals.
- 4- Sensor connection terminals.
- 5- Power connection terminals.

Dimensions

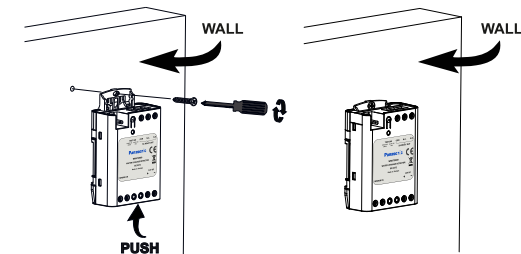


Installation

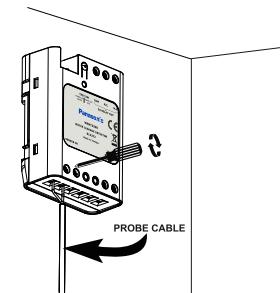
1. The probe should be mounted on the wall at the lowest point so that the two contacts nearly touch the floor. Screw can be used to mount the probe to wall.



2. Mount electronics box at maximum 1-meter distance to the probe. Please be careful water shouldn't touch the electronics box when there is a leakage.

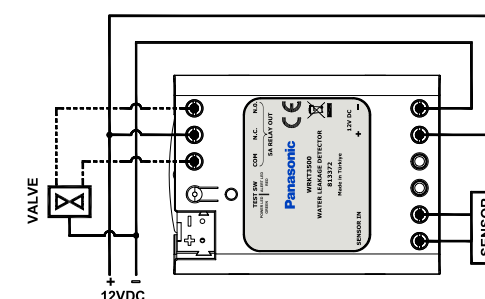


3. Connect probe, output (if necessary), 12 VDC power supply. Screws are must tighten between 0.5...0.6 Nm torque.



4. Test switch can be used for the final check of the output functionality and the buzzer.

Connection Diagram



• NO or NC relay connection should be according to the supported connection type of valve.

Notes

- Protect the device by using a circuit breaker at the declared current values at the relay outputs.
- Do not disassemble, repair or modify this device.
- Installation only in distribution boards and enclosed housings.
- When the product is to no longer be used, it must not be left in place and it must be removed.

WARNING

- Ensure that the power is cut off before the assembly of the products.
- Connection and assembly of the electrical devices should be carried out only by the technical personnel having certificate of competency.
- No responsibility is assumed for the entire of the malfunction, accident and loss arising from the assembly or interference of the persons not having the competency certificate.
- Use dry or slightly damp cloth to clean the buttons, cover and frame of the product. Never use alcohol, cologne, detergent or other similar chemicals for cleaning. Do not perform wet cleaning do not contact the product with water when the product is energized.
- In case the surface to which the product is connected is dyed, store the product by removing its cover and the frames.
- Keep the product away from the damp or wet environment during the transportation and shipping.
- It is intended for indoor use only.

Service and Guarantee

- Warranty period starts as of the delivery date of the product and it is 2 years.
- Warranty covers the malfunctions likely to occur due to the manufacturing defects of the product and within the warranty period.
- The product including all of its parts is under warranty as a whole. If the product turns out to be defective, the consumer can use one of the following rights stipulated in Article 11 of Consumer Protection Law no. 6502;
 - a- Withdrawal from the contract
 - b- Demanding discount from sales fee
 - c- Demanding free repair,
 - d- Demanding the replacement of the sold one with a fungible one free from defects.
- In case the consumer chooses the right of free repair among those rights; the dealer is obliged to repair the product or have the product repaired without claiming any fee under the name of replaced part fee, labor cost or for any other reasons. The consumer can also use the right of free repair against the manufacturer or exporter. The dealer, manufacturer and exporter are jointly and severally liable for the usage of this right by the consumer.
- In case the consumer uses the right of free repair and if the product fails within the warranty period again and
 - the maximum period required for the repair is exceeded and
 - Authorized service station, dealer, manufacturer or exporter state that it's not possible to repair the product in a report, the consumer can demand the return of the product fee, fee discount at the ratio of the defect or the replacement with the one free of defects, if possible, from the dealer. The dealer can not reject the demand of the consumer. In case this demand is not met, the dealer, manufacturer and exporter shall jointly and severally be held responsible.
- The repair period of the product can not exceed 20 business days. This period starts on the notification of the failure on the product to the authorized service station or the dealer within the warranty period and from the date of delivery of the product to the authorized service station out of warranty period. In case of not eliminating the product malfunction within 10 business days, manufacturer or importer is obliged to dedicate another product with similar characteristics to the use of the consumer until the completion of the product repair. In case the product fails within the warranty period, elapsed time is added to the warranty period.
- Usage of the product contrary to the rules stipulated in user's manual, operating out of determined voltage, current and environmental conditions, damage on the cable connection due to the user's fault and failure of the product due to the facts arising from the fire, flood, earthquake, lightning and similar disasters are not under warranty.
- The consumer can apply to the arbitration committee for consumers or the consumer court where the consumer operations are made or in the residential area for the disputes to be occurred regarding the usage of the rights arising from the warranty.
- In case the dealer doesn't provide this certificate of warranty, the consumer can apply to the General Directorate of Consumer Protection and Market Surveillance of Ministry of Customs and Trade".