

v:KO
by **Panasonic**



novella

A natural and sophisticated story.





NOVELLA

Novella combines refined living spaces with a bold style, continues to attract all eyes on itself. While shaping interior design trends with its assertive frame options, It also accompanies the lives carried to the future with new generation technologies including digital flush mounted thermostat applications.

Naturally stunning.



Standard and painted products



Silver



White



Satin



Bronze



Anthracite



Dark Gray



Black



Beech



Walnut



Cherry

Glass



White



Light Green



Dore



Maroon



Black



Eloxal (metal alloy)



Silver



Bronze



Black

Corian (Marble)



Aurora



Sandstone



Dusk



Black Quartz

Solid Wood



Maple



Oak



Walnut



Cherry

Switch

 <p>One-Way Switch MC: 92600001 BC: 926Y5X01</p> <p>  10AX, 250V~</p>	 <p>One-way Switch, Illuminated MC: 92600019 BC: 926Y5X19</p> <p>  10AX, 250V~</p>	 <p>2-Gang One-way Switch MC: 92600002 BC: 926Y5X02</p> <p>  10AX, 250V~</p>	 <p>2-Gang One-way Switch, Illuminated MC: 92600050 BC: 926Y5X50</p> <p>  10AX, 250V~</p>
 <p>Two-way Switch MC: 92600050 BC: 926Y5X50</p> <p>  10AX, 250V~</p>	 <p>Two-way Switch, Illuminated MC: 92600063 BC: 926Y5X63</p> <p>  10AX, 250V~</p>	 <p>One-way Push Button MC: 92600003 BC: 926Y5X03</p> <p>  10AX, 250V~</p>	 <p>Push Button, Illuminated MC: 92600014 BC: 926Y5X14</p> <p>  10AX, 250V~</p>
 <p>Push Button with Bell Symbol MC: 92600005 BC: 926Y5X06</p> <p>  10AX, 250V~</p>	 <p>Push Button with Label, Illuminated 24V LED MC: 92600027 BC: 926Y5X27</p> <p>  10AX, 24V~</p>	 <p>Push Button with Key Symbol MC: 92600005 BC: 926Y5X05</p> <p>  10AX, 250V~</p>	 <p>Intermediate Switch MC: 92600031 BC: 926Y5X31</p> <p>  10AX, 250V~</p>
 <p>Shutter Control Switch MC: 92600016 BC: 926Y5X16</p> <p>  10AX, 250V~</p>	 <p>2-Gang Two-way Switch MC: 92600017 BC: 926Y5X17</p> <p>  10AX, 250V~</p>	 <p>2-pole Switch MC: 92600039 BC: 926Y5X01</p> <p>  16AX, 250V~</p>	 <p>3-Gang One-way Switch MC: 92600068 BC: 926Y5X68</p> <p>  10AX, 250V~</p>
 <p>Cooler Anahtar MC: 92109198 BC: 922Y5X98</p> <p> 10AX, 250V~</p>	 <p>Impulse Komütatör MC: 92600083 BC: 926Y5X02</p> <p>  10AX, 250V~</p>	 <p>Double One-way Switch MC: 92600044 BC: 926Y5X02</p> <p>  10AX, 250V~</p>	 <p>Shutter Control Switch, Single Button MC: 92600072 BC: 926Y5X72</p> <p>  10AX, 250V~</p>
 <p>Emergency Push Button with Cord BC: 921Y5X18</p> <p>  10AX, 250V~</p>	 <p>Do not Disturb / Make-up Room Switch MC: 92600088 BC: 926Y5X88</p> <p>  10AX, 250V~</p>	 <p>Cable Outlet, Mech.+Cover MC: 92600092 BC: 926Y5X77</p>	 <p>Blank Cover MC: 92600090 BC: 926Y5X26</p>

Y5X Stands For: 050= Silver, 051= Satin, 052= Bronze, 053= Anthracite, 054= Fume, 055= Black, 056= Metallic White, 057= White, 058= Creme, 150= Cherry, 151= Walnut, 152= Beech

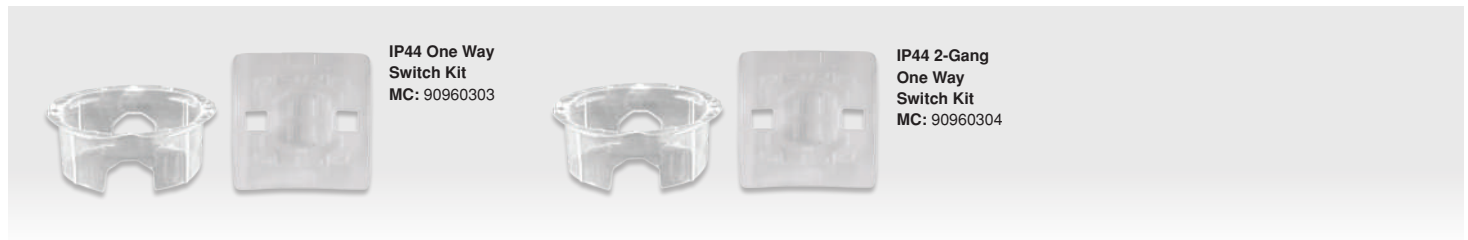
Y7X Stands for: 070= Silver, 071= Satin, 072= Bronze, 073= Anthracite, 074= Fume, 075= Black

MC Stands for: Mechanism Code

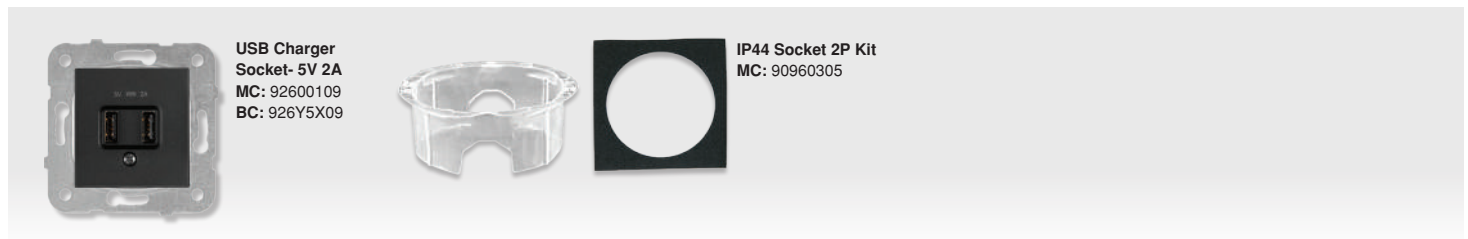
BC Stands for: Switch/Lid Code

 Screw Terminal  Screwless Terminal

Switch



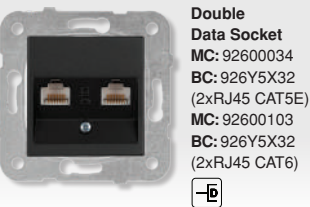
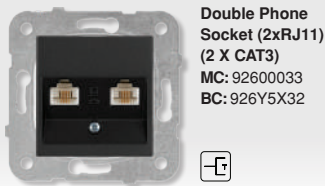
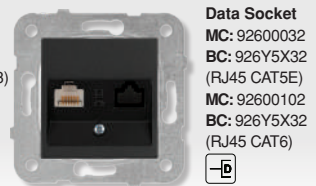
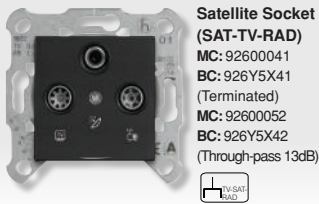
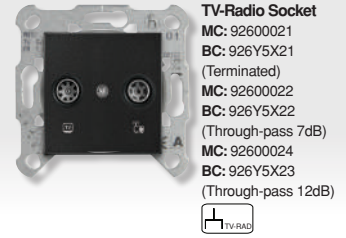
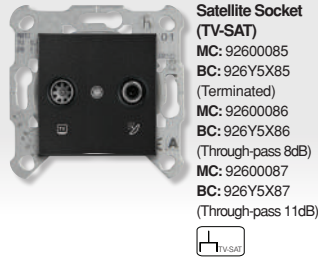
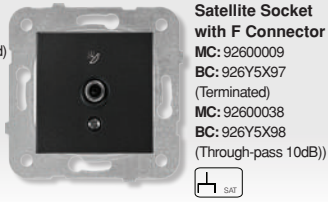
Socket



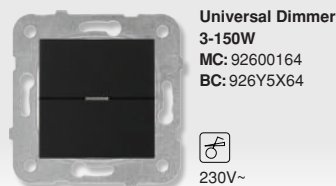
Y5X Stands For: 050= Silver, 051= Satin, 052= Bronze, 053= Anthracite, 054= Fume, 055= Black, 056= Metallic White, 057= White, 058= Creme, 150= Cherry, 151= Walnut, 152= Beech
Y7X Stands for: 070= Silver, 071= Satin, 072= Bronze, 073= Anthracite, 074= Fume, 075= Black
NN Stands for: 00= Silver, 01= Satin, 02= Bronze, 03= Anthracite, 04= Fume, 05= Black, 06= Beech, 07= Metallic White, 08= Cherry, 10= Walnut
MC Stands for: Mechanism Code
BC Stands for: Switch/Lid Code



TV-Data



Dimmer



Multimedia Connectors



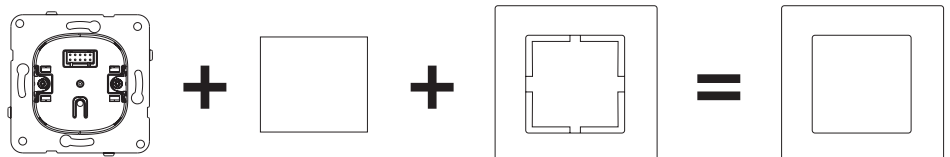
Y5X Stands For: 050= Silver, 051= Satin, 052= Bronze, 053= Anthracite, 054= Fume, 055= Black, 056= Metallic White, 057= White, 058= Creme, 150= Cherry, 151= Walnut, 152= Beech
 Y7X Stands for: 070= Silver, 071= Satin, 072= Bronze, 073= Anthracite, 074= Fume, 075= Black
 MC Stands for: Mechanism Code
 BC Stands for: Switch/Lid Code

Electronic Products

	<p>Flush Mounted Thermostat with Sensor MC: 92000133 (UF) BC: 926Y5X18 (UF) MC: 92000134 (UF-E) BC: 926Y5X18 (UF-E)</p>		<p>Room Thermostat MC: 92600127 BC: 926Y5X93 (Heating) MC: 92600130 BC: 926Y5X08 (Heating-Cooling)</p>		<p>Programmable Room Thermostat MC: 92600127 BC: 926Y5X94 (Heating) MC: 92600130 BC: 926Y5X07 (Heating-Cooling)</p>		<p>Programmable Shutter Control MC: 92600128 BC: 926Y5X95</p>
---	--	---	---	--	--	---	--

	<p>Motion Detector MC: 92600132 (3Wire 180°) BC: 920Y7X39 (3Wire 180°) MC: 92600126 (2Wire 180°) BC: 920Y7X38 (2Wire 180°)</p>		<p>13,56 Mhz RFID Energy Saver MC: 92109009 BC: 926Y5X22</p>		<p>Energy Saver-Mechanic Switch MC: 92109009 (5V DC-) BC: 926Y5X24 (5V DC-) MC: 92109012 (230V AC~) BC: 926Y5X25 (230V AC~)</p>		<p>Audio Socket MC: 92600093 BC: 926Y5X37</p>
---	---	---	---	--	--	---	--

	<p>Volume Control Switch MC: 92600080 BC: 926Y5X54 (With transformer)</p>		<p>Audio Channel Selection Switch MC: 92600082 BC: 926Y5X82</p>		<p>Buzzer MC: 92600096 BC: 926Y5X96</p>
--	--	--	--	---	--

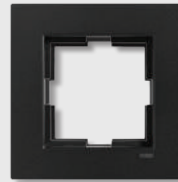


Y5X Stands For: 050= Silver, 051= Satin, 052= Bronze, 053= Anthracite, 054= Fume, 055= Black, 056= Metallic White, 057= White, 058= Creme, 150= Cherry, 151= Walnut, 152= Beech
Y7X Stands for: 070= Silver, 071= Satin, 072= Bronze, 073= Anthracite, 074= Fume, 075= Black
MC Stands for: Mechanism Code
BC Stands for: Switch/Lid Code





Flush Mounted Frame
9219A6X9 (Colored)
921913Y9 (Wood Pattern)
92192XX9 (Corian - Eloxal Metal - Wood)
92192XX9 (Glass)



Single Frame
9219A6X1 (Colored)
921913Y1 (Wood Pattern)
92192XX1 (Corian - Eloxal Metal - Wood)
92192XX1 (Glass)
92190YY1 (Acrylic)

(83 x 83 mm)

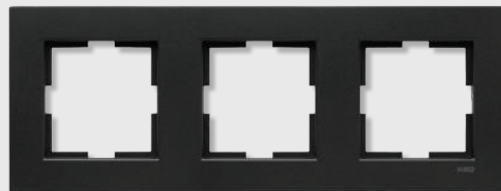


Surface Mounting Box, Single
9219A6X0 (Colored)



2 Gang Frame Horizontal
9219A6X2 (Colored)
921913Y2 (Wood Pattern)
92192XX2 (Corian - Eloxal Metal - Wood)
92192XX2 (Glass)
92190YY2 (Acrylic)

(154 x 83 mm)



3 Gang Frame Horizontal
9219A6X3 (Colored)
921913Y3 (Wood Pattern)
92192XX3 (Corian - Eloxal Metal - Wood)
92192XX3 (Glass)
92190YY3 (Acrylic)

(225 x 83 mm)



4 Gang Frame Horizontal
9219A6X4 (Colored)
921913Y4 (Wood Pattern)
92192XX4 (Corian - Eloxal Metal - Wood)
92192XX4 (Glass)
92190YY4 (Acrylic)

(296 x 83 mm)



5 Gang Frame Horizontal
9219A6X5 (Colored)
921913Y5 (Wood Pattern)

(367 x 83 mm)

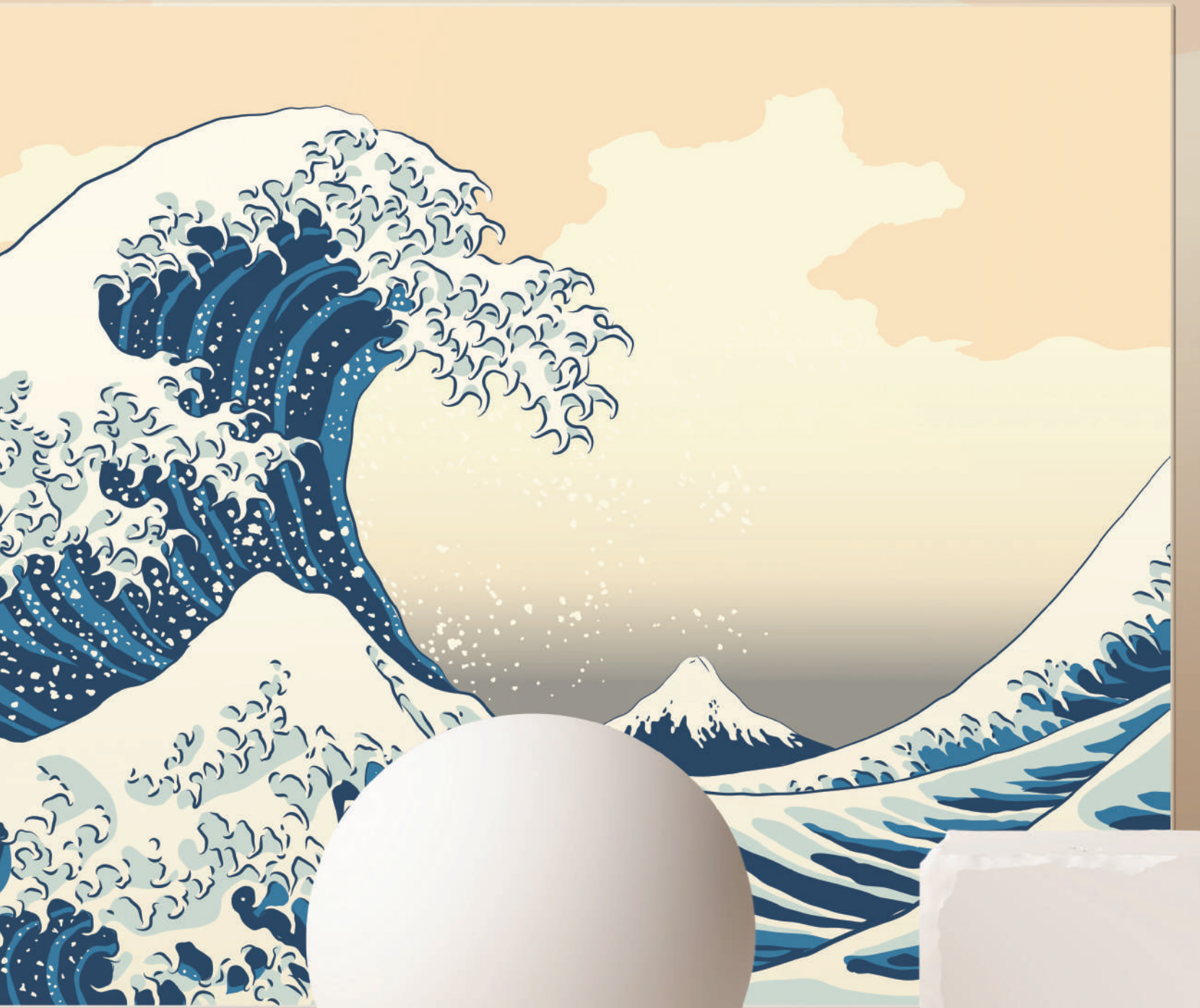


6 Gang Frame Horizontal
9219A6X6 (Colored)
921913Y6 (Wood Pattern)

(438 x 83 mm)

A Stands for: 0= Horizontal, 3= Vertical
X Stands for: 0= Silver, 1= Satin, 2= Bronze, 3= Anthracite, 4= Fume, 5= Black, 6= Metallic White
Y Stands for: 0= Cherry, 1= Walnut, 2= Beech
XX Stands for:
Eloxal: 30= Bronze, 31= Black, 32= Silver
Solid Wood: 10= Cherry, 11= Walnut, 12= Oak, 13= Maple
Corian: 00= Aurora, 01= Dusk, 02= Sandstone, 03= Black Quartz
Glass: 24= White, 25= Light Green, 26= Bordo, 27= Black, 28= Dore
YY stands for:
Acrylic: 00= Green, 01= White, 02= Black, 03= Red, 04= Matt Dore, 05= Matt White, 06= Matt Black

Elegant with its **naive texture and design...**



Taking its design inspiration from Japanese artist Katsushika Hokusai's magnificent work known as "The Great Wave at Kanagawa", VIKO Novella Soft Touch will bring the nobility of art to the walls of your homes with its innovative colour options and soft texture.

novella
SoftTouch



Turquoise



Seashell



Sandstone



Ocean



Night

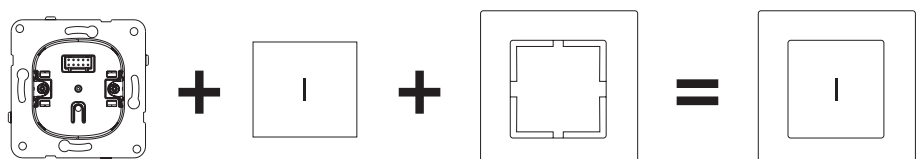
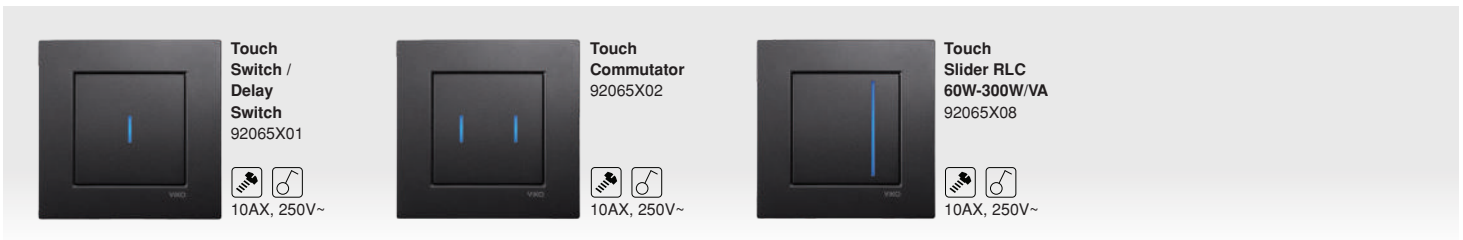
SILENT, STYLISH AND AWARD-WINNING



With the 3 award-winning Novella S, switching on and off the lights is now much more enjoyable... Just gently touch Novella S, whose touch performance is enhanced by using a new generation processor, and the lights will switch on, off or the atmosphere of the spaces will accompany your mood. The answer to your dreams for your living spaces is in the Novella S series.



Switch









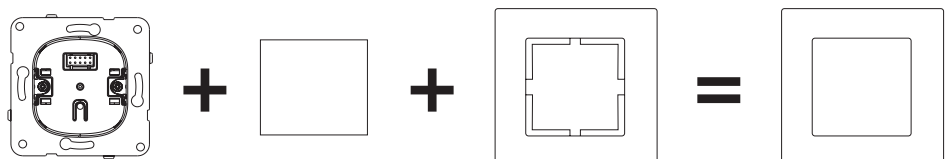
touchless



Switch on and off
without touching with Touchless

Switch

 <p>N/T Touchless Switch Mechanism 92600133</p> <p>  10AX, 250V~</p>	 <p>N/T Touchless Switch Upper Module 926Y5X33</p> <p>  10AX, 250V~</p>
--	---



Free, modernist and powerful.





TREnda

With its creative form, materials, colours and frames, Trenda brings style codes to dream homes.

Panasonic offers experiences that will change your habits with its modern and functional world. It invites you to new experiences with alternatives including Energy saver and digital underfloor thermostat applications.

The power of design, the colours of life.



Trenda Colored



Silver



Metallic White



Satin



Bronze



Anthracite



Fume



Black



Trenda Metallic



Chrome



Inox

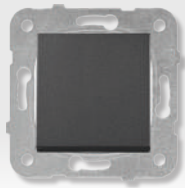


Gold



Antique

Switch



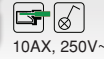
One-Way Switch
MC: 92600001
BC: 926Y5X01



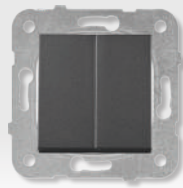
10AX, 250V~



One-Way Switch, Illuminated
MC: 92600019
BC: 926Y5X19



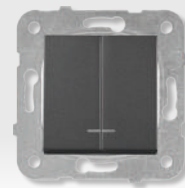
10AX, 250V~



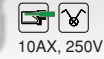
2-Gang One-way Switch
MC: 92600002
BC: 926Y5X02



10AX, 250V~



2-Gang One-way Switch, Illuminated
MC: 92600050
BC: 926Y5X50



10AX, 250V~



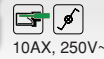
Two-way Switch
MC: 92600050
BC: 926Y5X50



10AX, 250V~



Two-way Switch, Illuminated
MC: 92600063
BC: 926Y5X63



10AX, 250V~



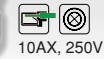
One-way Push Button
MC: 92600003
BC: 926Y5X03



10AX, 250V~



Push Button, Illuminated
MC: 92600014
BC: 926Y5X14



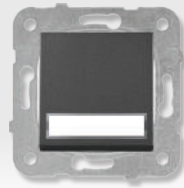
10AX, 250V~



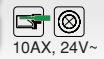
Push Button with Bell Symbol
MC: 92600005
BC: 926Y5X06



10AX, 250V~



Push Button with Label, Illuminated 24V LED
MC: 92600027
BC: 926Y5X27



10AX, 24V~



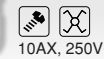
Push Button with Key Symbol
MC: 92600005
BC: 926Y5X05



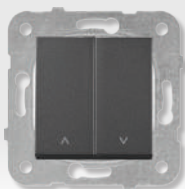
10AX, 250V~



2-Gang Two-way Switch
MC: 92600031
BC: 926Y5X31



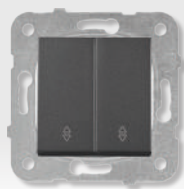
10AX, 250V~



Shutter Control Switch
MC: 92600016
BC: 926Y5X16



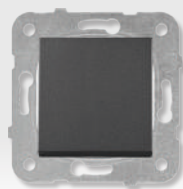
10AX, 250V~



2-Gang Two-way Switch
MC: 92600017
BC: 926Y5X17



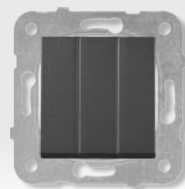
10AX, 250V~



2-Pole Switch
MC: 92600039
BC: 926Y5X01



16AX, 250V~



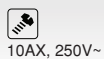
3-Gang One-way Switch
MC: 92600068
BC: 926Y5X68



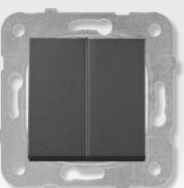
10AX, 250V~



Cooler Switch
MC: 92109198
BC: 922Y5X98



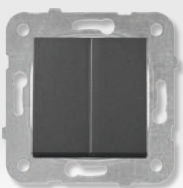
10AX, 250V~



Double One-way Push Button
MC: 92600083
BC: 926Y5X02



10AX, 250V~



Double One-way Switch
MC: 92600044
BC: 926Y5X02



10AX, 250V~



Shutter Control Switch, Single Button
MC: 92600072
BC: 926Y5X72



10AX, 250V~



Emergency Push Button with Cord
BC: 921Y5X18



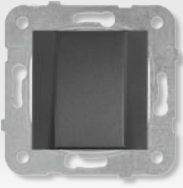
10AX, 250V~



Do not Disturb / Make-up Room Switch
MC: 92600088
BC: 926Y5X88



10AX, 250V~



Cable Outlet, Mech.+Cover
MC: 92600092
BC: 926Y5X77

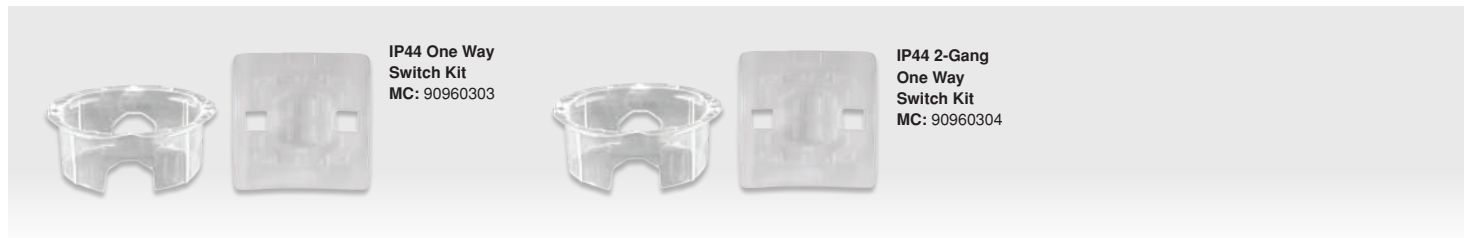


Blank Cover
MC: 92600090
BC: 926Y5X26

Y5X Stands for: 050= Silver, 051= Satin, 052= Bronze, 053= Anthracite, 054= Fume, 055= Black, 056= Metallic White, 057= White, 058= Creme, 150= Cherry, 151= Walnut, 152= Beech
Y7X Stands for: 070= Silver, 071= Satin, 072= Bronze, 073= Anthracite, 074= Fume, 075= Black
MC Stands for: Mechanism Code
BC Stands for: Switch / Lid Code



Switch
















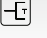

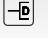







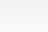
Socket



Y5X Stands for: 050= Silver, 051= Satin, 052= Bronze, 053= Anthracite, 054= Fume, 055= Black, 056= Metallic White, 057= White, 058= Creme, 150= Cherry, 151= Walnut, 152= Beech
Y7X Stands for: 070= Silver, 071= Satin, 072= Bronze, 073= Anthracite, 074= Fume, 075= Black
T Stands for: 0= Silver, 1= Satin, 2= Bronze, 3= Anthracite, 4= Fume, 5= Black, 6= Metallic White
MC Stands for: Mechanism Code
BC Stands for: Switch / Lid Code



TV-Data

 <p>TV Socket MC: 92600010 BC: 926Y5X10 (Terminated) MC: 92600059 BC: 926Y5X11 (Through-pass 8dB) MC: 92600060 BC: 926Y5X12 (Through-pass 12dB) MC: 92600049 BC: 926Y5X13 (Lossless)</p> 	 <p>Satellite Socket with F Connector MC: 92600009 BC: 926Y5X97 (Terminated) MC: 92600038 BC: 926Y5X98 (Through-pass 10dB)</p> 	 <p>Satellite Socket (TV-SAT) MC: 92600085 BC: 926Y5X85 (Terminated) MC: 92600086 BC: 926Y5X86 (Through-pass 8dB) MC: 92600087 BC: 926Y5X87 (Through-pass 11dB)</p> 	 <p>TV-Radio Socket MC: 92600021 BC: 926Y5X21 (Terminated) MC: 92600022 BC: 926Y5X22 (Through-pass 7dB) MC: 92600024 BC: 926Y5X23 (Through-pass 12dB)</p> 
 <p>Satellite Socket (SAT-TV-RAD) MC: 92600041 BC: 926Y5X41 (Terminated) MC: 92600052 BC: 926Y5X42 (Through-pass 13dB)</p> 	 <p>SAT-SAT-TV Socket (SAT-SAT-TV) MC: 92600053 BC: 926Y5X53 (Terminated)</p> 	 <p>Phone Socket (RJ11) MC: 92600013 BC: 926Y5X32 (CAT3)</p> 	 <p>Data Socket MK: MC: 92600032 BC: 926Y5X32 (RJ45 CAT5E) MC: 92600102 BC: 926Y5X32 (RJ45 CAT6)</p> 
 <p>Double Phone Socket (2xRJ11) MC: 92600033 BC: 926Y5X32</p> 	 <p>Double Data Socket MC: 92600034 BC: 926Y5X32 (2xRJ45 CAT5E) MC: 92600103 BC: 926Y5X32 (2xRJ45 CAT6)</p> 	 <p>Phone & Data Socket MC: 92600035 BC: 926Y5X32 (RJ45 CAT5E - CAT3) MC: 92600104 BC: 926Y5X32 (RJ45 CAT6 - CAT3)</p> 	 <p>Double Keystone Socket w/o Connectors MC: 92600101 BC: 926Y5X32</p> 

Dimmer





 <p>Rotatif Dimmer R 40-600W MC: 92600047 BC: 926Y5X20</p>  <p>230V~</p>	 <p>Pro Dimmer RL 20-500W/VA MC: 92109340 BC: 926Y5X84</p>  <p>230V~</p>	 <p>Pro Dimmer RL 6-100W/VA MC: 92600129 BC: 926Y5X84</p>  <p>230V~</p>	 <p>Pro Dimmer RC 40-400W/VA MC: 92600122 BC: 926Y5X84</p>  <p>230V~</p>
 <p>Pro Dimmer RLC 20-350W/VA MC: 92600123 BC: 926Y5X84</p>  <p>230V~</p>	 <p>1-10V Dimmer MC: 92600124 BC: 926Y5X84</p>  <p>230V~</p>	 <p>Universal Dimmer 3-150W MC: 92600164 BC: 926Y5X64</p>  <p>230V~</p>	

Multimedia Connectors

 <p>Connector for HDMI Connection MC: 92600105 BC: 926Y5X11</p> 	 <p>VGA Connector MC: 92600106 BC: 926Y5X13 MC: 92600107 (PCB)</p> 	 <p>USB Connector MC: 92600108 BC: 926Y5X15</p> 	 <p>Fiber Optic Connector MC: 92600029 BC: 926Y5X29</p>
---	--	--	---

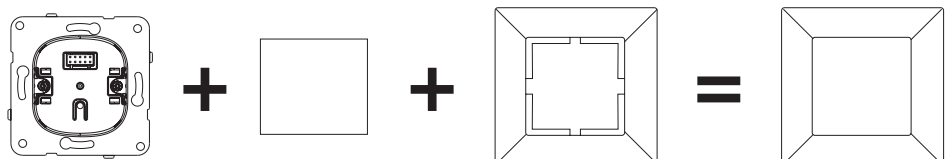
Y5X Stands for: 050= Silver, 051= Satin, 052= Bronze, 053= Anthracite, 054= Fume, 055= Black, 056= Metallic White, 057= White, 058= Creme, 150= Cherry, 151= Walnut, 152= Beech
Y7X Stands for: 070= Silver, 071= Satin, 072= Bronze, 073= Anthracite, 074= Fume, 075= Black
MC Stands for: Mechanism Code
BC Stands for: Switch / Lid Code

Electronic Products

	<p>Flush Mounted Thermostat with Sensor MC: 92000133 (UF) BC: 926Y5X18 (UF) MC: 92000134 (UF-E) BC: 926Y5X18 (UF-E)</p>		<p>Room Thermostat MC: 92600127 BC: 926Y5X93 (Heating) MC: 92600130 BC: 926Y5X08 (Heating-Cooling)</p>		<p>Programmable Room Thermostat MC: 92600127 BC: 926Y5X94 (Heating) MC: 92600130 BC: 926Y5X07 (Heating-Cooling)</p>		<p>Programmable Shutter Control MC: 92600128 BC: 926Y5X95</p>
---	--	---	---	--	--	---	--

	<p>Motion Detector (V2) MC: 92600132 (3Wire 180°) BC: 920Y7X39 (3Wire 180°) MC: 92600126 (2Wire 180°) BC: 920Y7X38 (2Wire 180°)</p>		<p>13,56 MHz RFID Energy Saver MC: 92109009 BC: 926Y5X22</p>		<p>Energy Saver-Mechanic Switch MC: 92109009 (5V DC-) BC: 926Y5X24 (5V DC-) MC: 92109012 (230V AC~) BC: 926Y5X25 (230V AC~)</p>		<p>Audio Socket MC: 92600093 BC: 926Y5X37</p>
---	--	---	---	--	--	---	--

	<p>Volume Control Switch MC: 92600080 BC: 926Y5X54 (with Transformer)</p>		<p>Audio Channel Selection Switch MC: 92600082 BC: 926Y5X82</p>		<p>Buzzer MC: 92600096 BC: 926Y5X96</p>
--	--	--	--	---	--



Y5X Stands for: 050= Silver, 051= Satin, 052= Bronze, 053= Anthracite, 054= Fume, 055= Black, 056= Metallic White, 057= White, 058= Creme, 150= Cherry, 151= Walnut, 152= Beech
Y7X Stands for: 070= Silver, 071= Satin, 072= Bronze, 073= Anthracite, 074= Fume, 075= Black
MC Stands for: Mechanism Code
BC Stands for: Switch / Lid Code





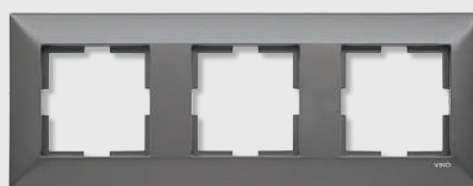
Flush Mounted Frame
9219A7X9 (Colored)
9219A8Y9 (Metal)



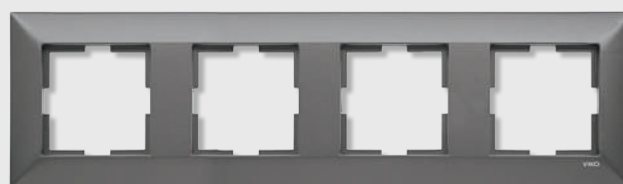
Single Frame
9219A7X1 (Colored)
9219A8Y1 (Metal)
(83 x 83 mm)



2 Gang Frame Horizontal
9219A7X2 (Colored)
9219A8Y2 (Metal)
(154 x 83 mm)



3 Gang Frame Horizontal
9219A7X3 (Colored)
9219A8Y3 (Metal)
(225 x 83 mm)



4 Gang Frame Horizontal
9219A7X4 (Colored)
9219A8Y4 (Metal)
(296 x 83 mm)



5 Gang Frame Horizontal
9219A7X5 (Colored)
(367 x 83 mm)



6 Gang Frame Horizontal
9219A7X6 (Colored)
(438 x 83 mm)



Surface Mounting Box, Single
9219A7X8 (Colored)